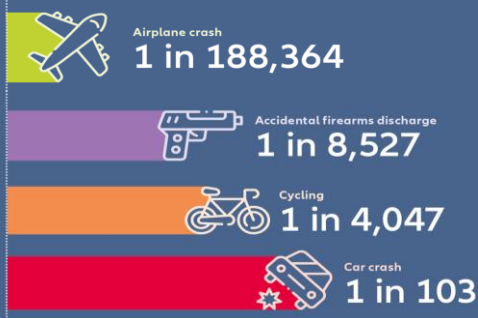


# OTHER ROAD USERS

## DANGER OF DEATH... WHAT ARE THE ODDS?

Lifetime odds of death for selected causes



Source: US National Safety Council. Based on data from the National Center for Health Statistics - Mortality Data for 2017, as compiled from data provided by the 57 vital statistics jurisdictions through the Vital Statistics Cooperative Program. Population and life expectancy data are from the US Census Bureau. Deaths are classified on the basis of the 10th revision of the International Classification of Diseases (ICD-10).  
Graphic: Allianz Global Corporate & Specialty

## ODDS OF DYING IN A CRASH:

- Automobile 1 in 103
- Pedestrian 1 in 649
- Motorcyclist 1 in 770
- Bicyclist 1 in 4,047
- Airplane 1 in 188,364

## BUTLER COUNTY STATS AND FACTS:

### 17 Percent

Of all traffic fatalities in 2019 were pedestrians (compared to 12% in 2009)

### 40 people/families

The number of people/families in Butler County over the last 5 years who lost a loved one in a pedestrian or motorcycle crash

### 27x more

Motorcycles crashes are 27x more likely to result in a fatality compared to other motor vehicle crashes

### #9 in the nation

Ohio ranks #9 in the nation for railroad collisions and fatalities

## Railroad safety

While the number of highway-rail crossing collisions, deaths, and injuries has dropped over the past five decades, it's still a startling fact that about every three hours in the U.S. a person or vehicle is hit by a train. Here are some lifesaving railway safety tips:



Every 4 hours in the U.S. someone is struck by a train

- Never drive or walk around lowered grade crossing gates
- Don't attempt to "outrun" a train coming down the tracks
- Never allow your vehicle to stop on a crossing waiting for traffic to move
- Call the Emergency Notification System (ENS) to report problems or obstructions at a crossing
- Remember it takes about **one mile for a train to stop**

Resources from Operation Life Saver (OLI):

[OLI Track Safety Basics](#)

[OLI Driving Safely Near Tracks](#)

[OLI Walking Safely Near Tracks](#)

[See Tracks? Think Train! "Can" Spot \(:30 Video\)](#)



Other Railroad Safety Resources:

[Safe Kids Worldwide Railroad Safety](#)

[National Safety Council \(NSC\) Rail Safety](#)



# OTHER ROAD USERS

## Pedestrian Safety

Across the country the number of pedestrian fatalities, no matter the cause, has increased by more than 50% in the past 10 years. Using 2019 preliminary data from NHTSA, the Governor's Highway Safety Association estimates nearly 6,600 pedestrians died last year. That's the **highest number of pedestrian deaths in more than 30 years**. Some key tips for pedestrians to maintain safety:



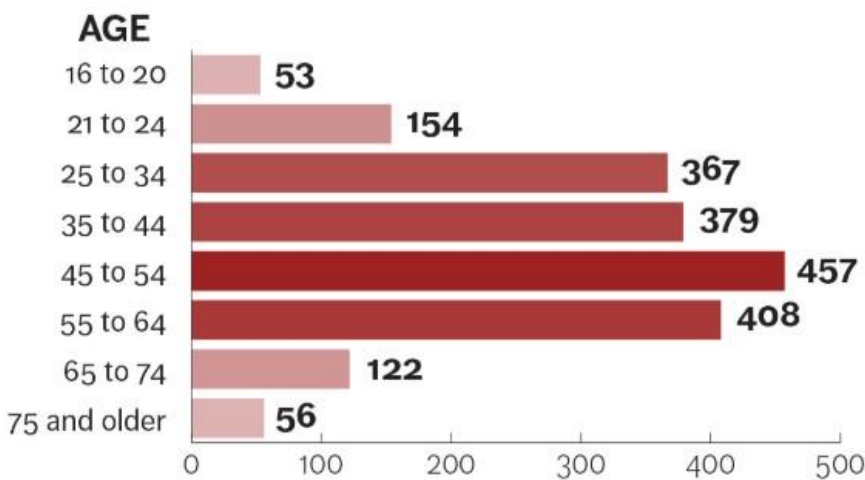
- Stay alert at all times
- Never Assume a Driver Sees You
- Look Both Ways
- Walk on the Sidewalks and in Designated Crossings
- Be Visible
- Avoid Alcohol and Drugs when Walking

In 2018 people ages 50 to 64 accounted for more than a quarter of pedestrian deaths. People 45-64 comprised the highest number of **drunk pedestrian deaths**.



### Ages 45 to 64 suffer most

In 2018, the number of drunk pedestrian deaths were highest for the 45-54 age group. A look at all age groups where the victim had a blood alcohol content of 0.08% or greater:



Source: Governors Highway Safety Association analysis of Fatality Analysis Reporting System data

Resources:

[FMCSA Safety Tips for Pedestrians](#)

[AAA Tips for Pedestrian Safety](#)

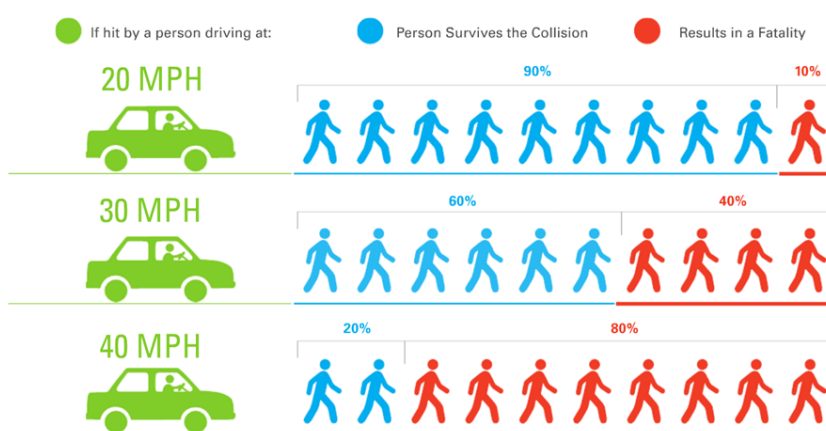
[National Safety Council \(NSC\) Pedestrian Safety](#)

[NHTSA Walkability Checklist](#)

[NHTSA How Pedestrians Can Walk Safely](#)

[NHTSA Pedestrian Traffic Fact Sheets and Statistics](#)

[DefensiveDriving.org 19 Pedestrian Safety Tips for Drivers](#)





# OTHER ROAD USERS

## PUT A LID ON IT

### Bicycle Safety

As you might expect, when a crash occurs between a vehicle and a bike, it's the cyclist who is most likely to be injured. A large percentage of crashes can be avoided if motorists and cyclists follow the rules of the road and watch out for each other. How to best be safe while using a bicycle:



- Ride a bike that fits and works
- Wear protective equipment – helmet, bright clothing, protective gear, and reflectors
- Carry items in a backpack or strapped to the back of the bike
- Unplug and pay attention
- Plan your route – if driving as a vehicle on the road, choose routes with less traffic and slower speeds

Additional Bicycle Resources:

[NHTSA Bicycle Safety](#)

[NHTSA Bicycle Safety Tips for Parents and Kids](#)

[AAA - Bike Safety \(YouTube Videos\)](#)

[NHTSA Bicyclists/Pedacyclists Crash Statistics](#)



### Motorcycle Safety

Motorcycle riders are overrepresented in traffic fatalities. Safe riding practices and cooperation from all road users will help reduce the number of fatalities and injuries on our nation's highways.

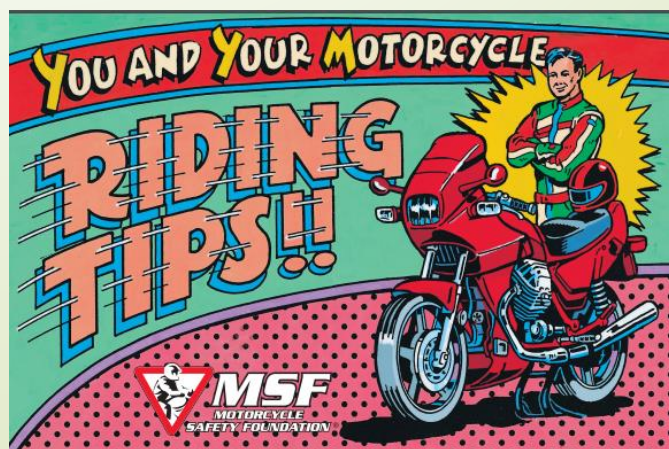
It's especially important for drivers to understand the safety challenges faced by motorcyclists such as size and visibility. Driving a car and riding a motorcycle require different skills and knowledge.

Additional Resources:

[Motorcycle Ohio Resources and Classes](#)

[NHTSA Motorcycle Safety](#)

[CDC Motorcycle Safety](#)



[National Safety Council \(NSC\) Motorcycle Safety](#)

[10 Common Motorcycle Crashes and How to Avoid Them](#)

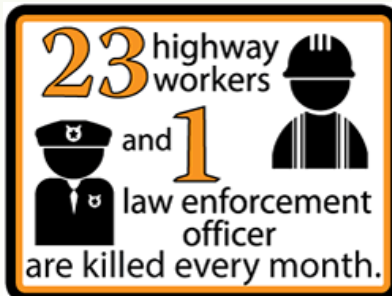


# OTHER ROAD USERS



Ohio's Move Over Law requires motorists to cautiously shift over one lane — or slow down if changing lanes is not possible — when passing any vehicle with flashing lights on the side of a road. Its purpose is to protect everyone who works on our roads and everyone who travels on them.

## Why Move Over?



In the United States



- Work zone crashes in Ohio are on the rise
- In 2019 in Ohio there were 6,574 work zone crashes and **16 deaths**
- Rear-end crashes (running into the rear of a slowing or stopping vehicle) are the most common type of crashes
- The most common factor – following too closely

Move over for safety – every worker, every time!

Resources:

[Ohio Department of Transportation \(ODOT\) Move Over Move Over Flyer](#) and [Move Over Poster](#)

[Federal Motor Carrier Safety Administration \(FMCSA\) Work Zone Safety Tips](#)

[National Safety Council \(NSC\) Work Zone Safety](#)

[National Work Zone Safety Information Clearinghouse](#)





# OTHER ROAD USERS

## Commercial Motor Vehicles



[www.ShareTheRoadSafely.gov](http://www.ShareTheRoadSafely.gov)



Trucks, buses, and RVs can pose special hazards because they are significantly larger and heavier than other vehicles. While bus and truck drivers are experienced professional operators, other drivers may not recognize the importance of special considerations in sharing roads with these large vehicles.

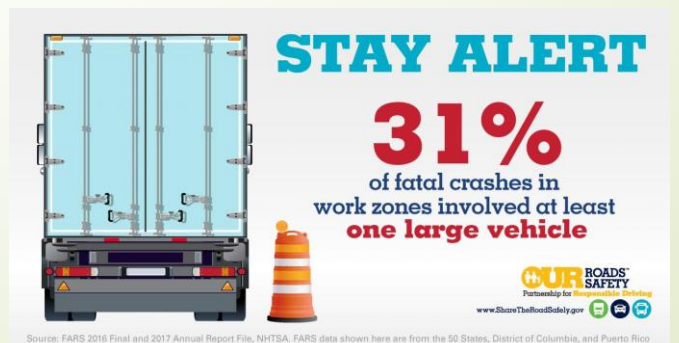
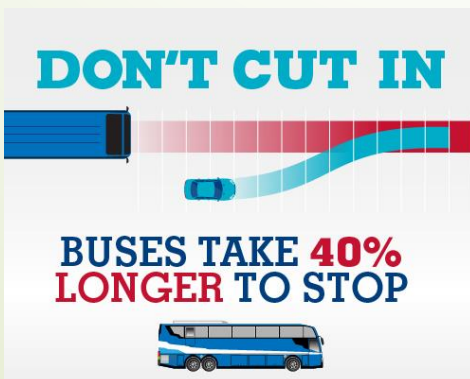
Be aware of their unique circumstances:

### BE AWARE OF BLIND SPOTS



- Allow plenty of room
- Do not follow closely
- Watch for the commercial driver's signals
- Beware of No Zones

## Be Visible. Be Safe. Be Truck Aware.



Resources:

[Ohio Department of Transportation \(ODOT\) Move Over Move Over Flyer](#) and [Move Over Poster](#)

[Federal Motor Carrier Safety Administration \(FMCSA\) Tips for Driving Safely Around Large Trucks and Buses](#)

[FMCSA Tips for Trucks and Bus Drivers](#)



# OTHER ROAD USERS

Need to take a remedial driving course for a 2-point credit on your license or to get your license renewed? Safety Council of Southwestern Ohio offers classes. [Click here for a list of upcoming dates.](#)

## Butler County Statistics on Other Road Users

### School Zone Safety

In the state of Ohio you must stop when driving from either direction (does not apply to multiple-lane or divided highways) until the children are safely off the street and the school bus lights stop flashing.



Additional Resources:

[NHTSA School Bus Safety](#)

[NHTSA School Bus Safety Facts and Statistics](#)

[The Ultimate List of Driving Statistics for 2020](#)

Other Butler County Statistics:

[Butler County Statistics on Seat Belt Use](#)

[Butler County Statistics on Distracted Driving](#)

[Butler County Statistics on Teen/Youth/New Drivers](#)

[Butler County Statistics on Impaired Driving](#)

[Butler County Statistics on Mature Drivers](#)

Other Butler County Safe Communities' pages:

[Seat Belts and Car Seats](#)

[Impaired Driving](#)

[Distracted Driving](#)

[Teen and New Drivers](#)

[Mature Drivers](#)

[Other Safety Focus Areas](#)



Funded by U.S. DOT/NHTSA (National Highway Traffic Safety Administration) and ODPS (Ohio Department of Public Safety),

The Safety Council of Southwestern Ohio is the fiscal agent for Butler County Safe Communities

